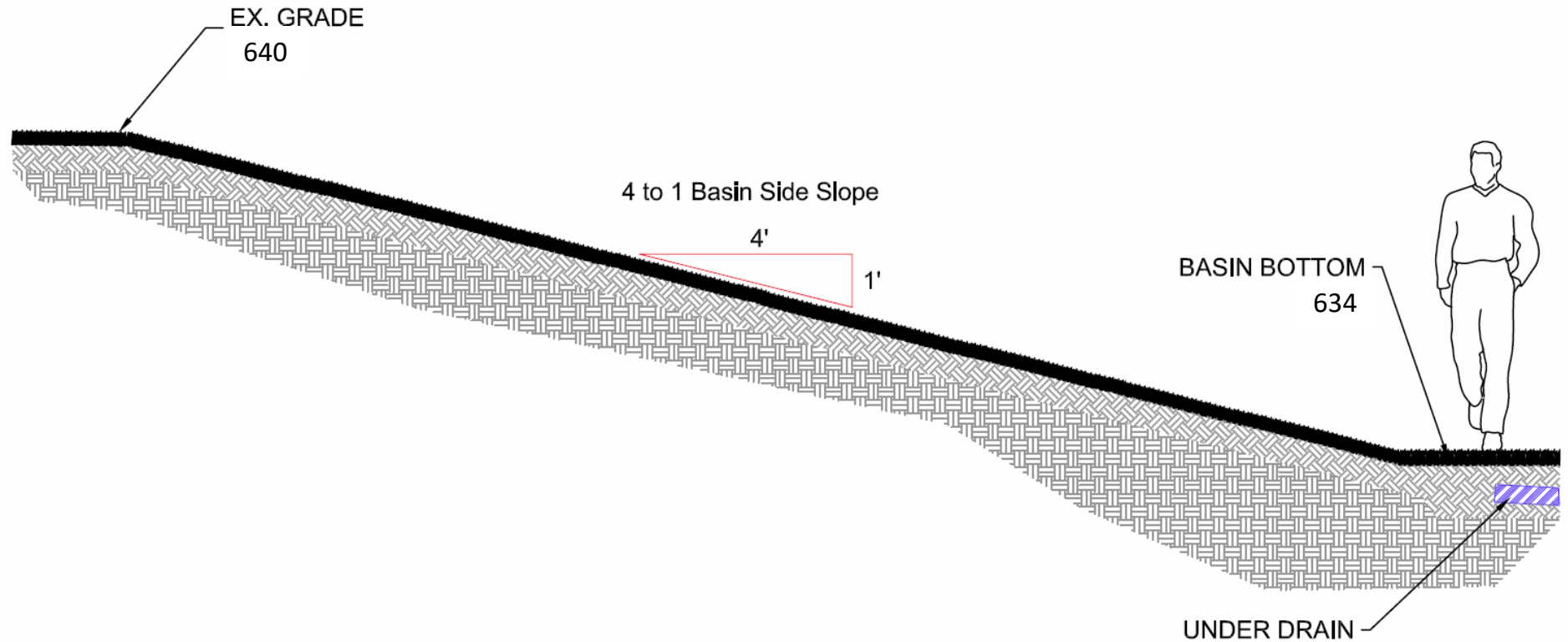
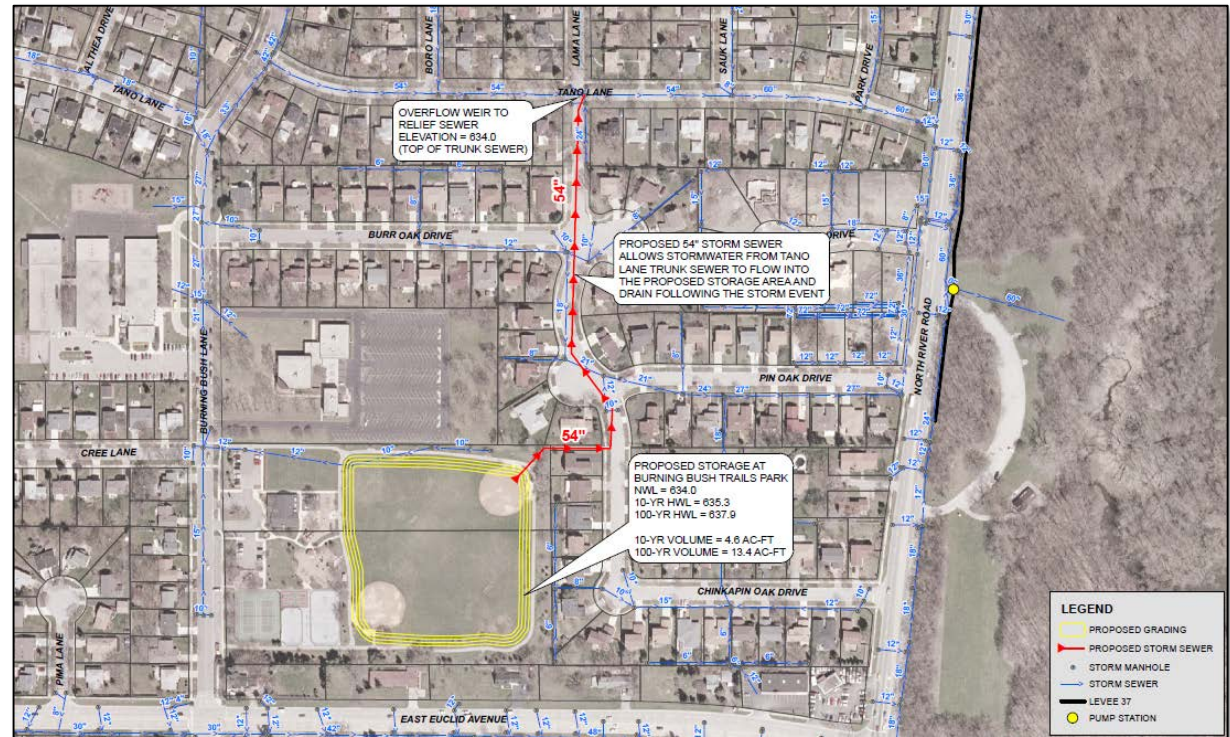


Proposed Storage Area Typical Sideslope



Storage at Burning Bush Trails Park:

- Construct a stormwater facility that provides 13.4 acre-feet of storage
- Proposed weir and relief sewer allows stormwater to flow from Tano Lane trunk sewer into proposed storage basin during large storms
- Existing depressional storage volume = 8.7 ac-ft
- Estimated Cost = **\$2.3M**



Rainfall Analysis:

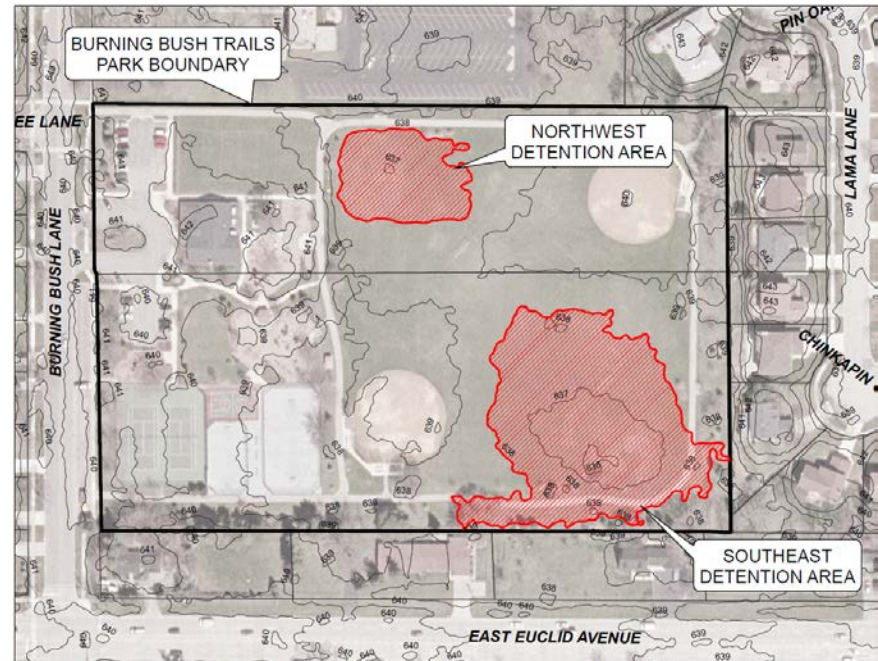
- Analyzed 5-year of rainfall data (USGS Rolling Meadows gage)
- Received water an average of 2 times/year
- Average pond fill duration per event = 1.5 hours
- Average pond depth per event = 0.7 feet

Assumptions:

- Concept location only
- Side slopes are 4:1
- Maximum Water Depth = 3.9 feet
- Designed to accommodate underdrains

Existing Detention Storage at Burning Bush Trails Park

- **Two detention areas** are located in the outfields of the baseball fields
- Detention constructed in **1997** for the amenity improvements west of the ballfields
- Detention volume = 0.7 ac-ft
- Maximum depth = 2.0 feet
- Area at HWL = 1.1 acres



Pottawattomie Park – Tinley Park



Softball Diamond



Playground



Flood Storage

Lions Park – Bensenville



Playground



Flood Storage

Washington Park – Downers Grove



Playground



Playing Field with Seating



Flood Storage

